

PROCESS OPERATOR - FOOD MANUFACTURING PROGRAM

PROGRAM HIGHLIGHTS



GOVERNMENT MONEY

The employer will be compensated approximately \$4,500 per employee who participates. An additional \$2,000 is given directly to employees who complete the program.

Note - Employees who qualify are those who are directly involved in production.



ATTRACT AND RETAIN EMPLOYEES

Upon completion of the program, employees receive a college level certificate along with their \$2,000 bonus.

This gives participating companies a way to differentiate themselves when hiring, and motivation for employees to stay with their employers.



IMPROVED OPERATIONAL EFFICIENCY

The education employees receive through the program improves their baseline knowledge making each employee better skilled in their roles. This translates into a better workforce that is all on the same page.

Note - All education is delivered without disruption to current production.

LEARNING OUTCOMES



FOOD SAFETY & SECURITY

- GMP
- HACCP
- Traceability
- Packaging



ENVIRONMENT SAFETY

- Emergency response
- Waste regulations



EQUIPMENT & MECHANICAL

- Troubleshooting
- Conveyors
- Pneumatics
- Hydraulics



COMMUNICATION & COMPUTER SKILLS

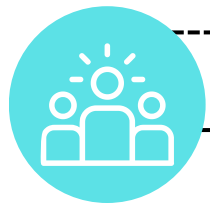
- Use basic Word & Excel
- Business communication



CONTINUOUS QUALITY IMPROVEMENT

- Lean & TPM concepts
- Six Sigma
- Process control

FREQUENTLY ASKED QUESTIONS



How much time will this take our people?

The content is delivered online and is broken down into short modules that can take as little as 10-15 minutes at a time. Employees can do this on their own time from any device that is connected to the internet.



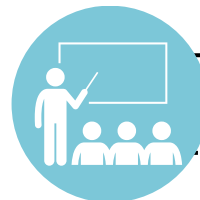
How much will this cost?

All costs associated with registration for the program are covered by Scaling Education and there are no hidden or out-of-pocket fees.



Who can participate?

Existing staff and future employees who are working with food and food based products all qualify to participate in the program.



What if staff are already trained in some areas?

Staff will be exempt from modules if their previous training included the knowledge required. e.g. food safety or WHMIS etc.



Can employees on a work visa participate?

Yes, they can as long as the conditions of the visa include going to school and they have a Social Insurance Number.